

신경과 업데이트: 치매



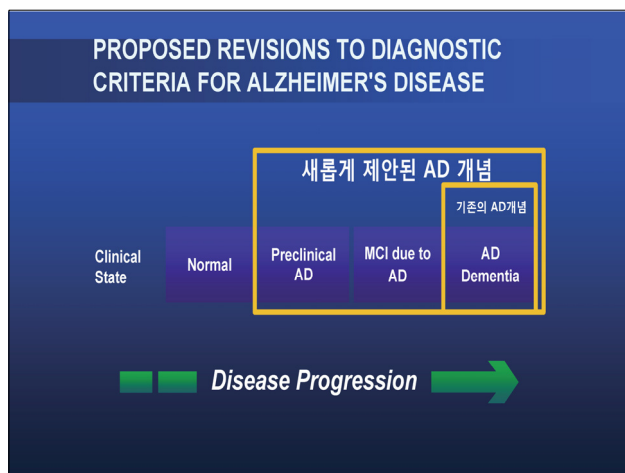
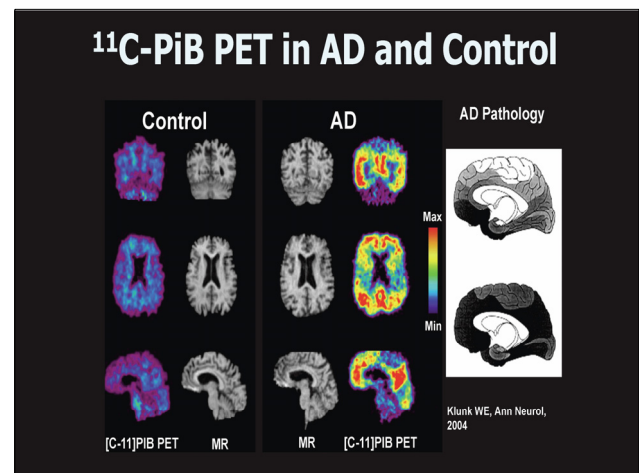
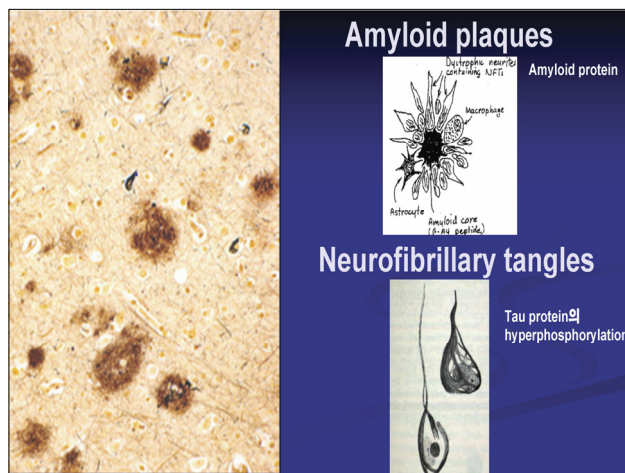
서 상 원

삼성서울병원 뇌신경센터 신경과

Update in Neurology I: Dementia

Sang Won Seo

Department of Neurology Neuroscience center Samsung Medical Center



- ### Appropriate Use
1. Patients with persistent or progressive **unexplained MCI**
 2. Patients satisfying core clinical criteria for possible AD because of unclear clinical presentation, either an **atypical clinical course** or an **etiologically mixed presentation**
 3. Patients with progressive dementia and **atypically early age of onset** (usually defined as 65 years or less in age)
- Johnson et al., 2013 J Nucl Med

Inappropriate Use

1. Patients with **core clinical criteria for probable AD** with typical age of onset
2. To determine **dementia severity**
3. Based solely on a **positive family history of dementia or presence of APOE ε4**
4. Patients with a cognitive complaint that is **unconfirmed on clinical examination**
5. In lieu of genotyping for suspected autosomal mutation carriers
6. In **asymptomatic individuals**
7. Nonmedical use (e.g., legal, insurance coverage, or employment screening)

Johnson et al., 2013 J Nucl Med

